

# Compare:

Language or Mathematics

Response must include:

- what is the same
- what is different

Response should include:

- examples that show how the things are similar or different in one or more important ways



# Define:

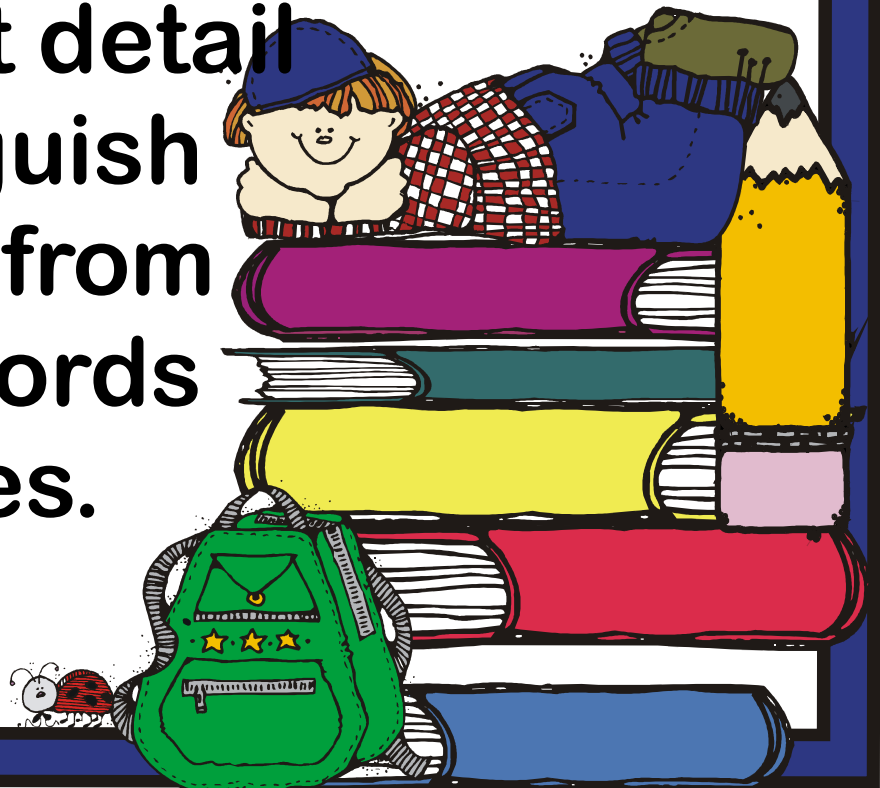
Language

Response must :

- state the meaning of the word or phrase being defined.

Response should :

- include the meaning and sufficient detail to distinguish meaning from similar words or phrases.



# Describe:

Language or Mathematics

Questions can ask for a description of something, someone or an idea or the sequence in which a series of things happens or a problem is solved.

The response must:

- use words to create a mental picture of what is being described for the reader.
- give the characteristics and key features of what is being described in an organized manner.



# Determine:

Language or Mathematics

The response must:

- show a solution to a problem using logical reasoning or mathematics.



# **Explain/Explain your Thinking Language**

**The response must:**

- provide specific and relevant supporting details.
- show the link between the explanation and the idea or point being explained to make the answer clear.

**The response must:**

- use words to make clear how something (or someone) works,
- what something (or someone) is like or
- why something happens or works the way it does (emphasis is on cause-effect relationships or step-by-step sequences).



# **Explain/Explain your Thinking Mathematics**

**The response must:**

- **use mathematical symbols or words to make clear and understandable why a mathematical solution is correct.**



# Identify

## Language

Questions can ask for the name of a person, place or thing, or for a reason.

The response must:

- use information from the reading selection.

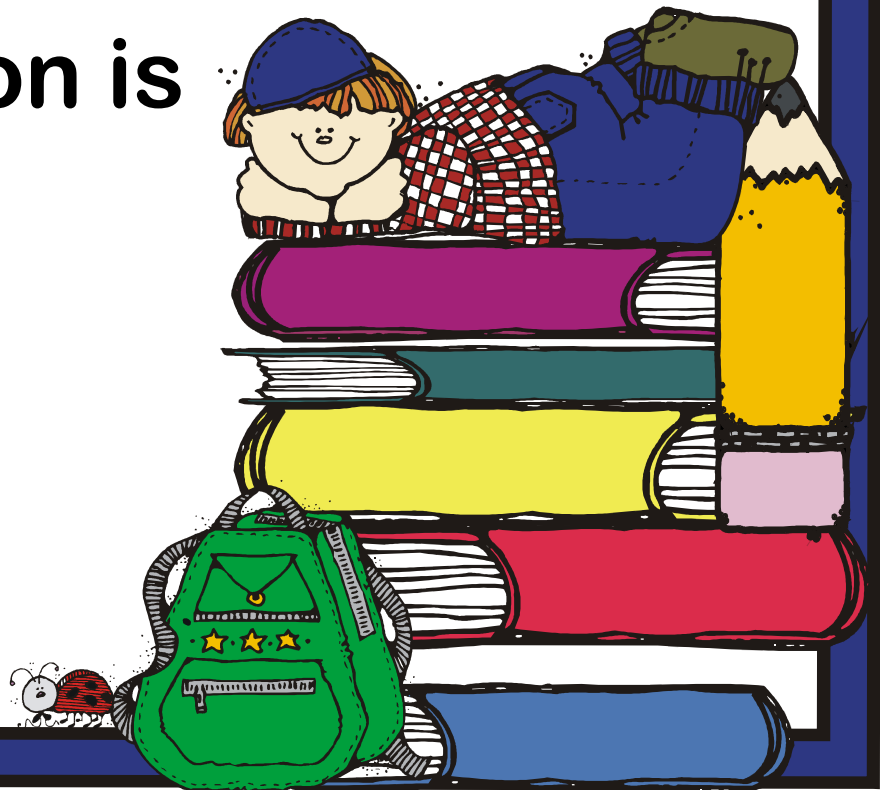


# Justify

## Language or Mathematics

The response must:

- give reasons, evidence and/or calculations to show why an answer, argument or conclusion is correct.





# Predict

Language or Mathematics

The response must:

- identify what may happen based on the information provided in the reading selection or mathematical question.



# Show Your Work

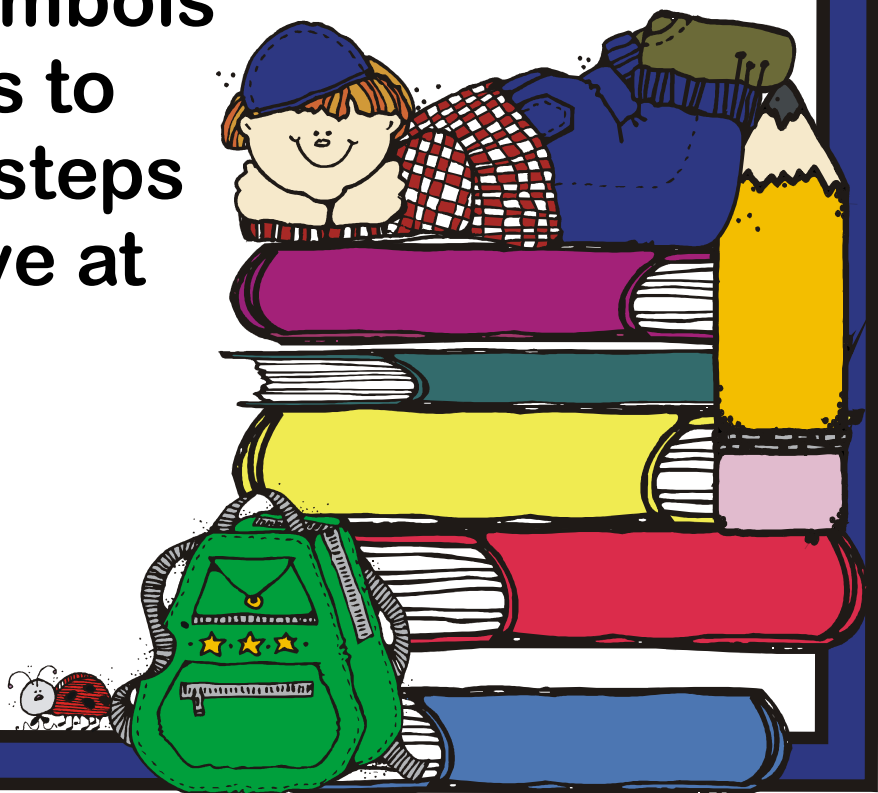
## Mathematics

The response must:

- Include all mathematical calculations made to arrive at the answer.

The response should include:

- words, numbers, graphs, diagrams, symbols and/or charts to show all the steps used to arrive at the answer.

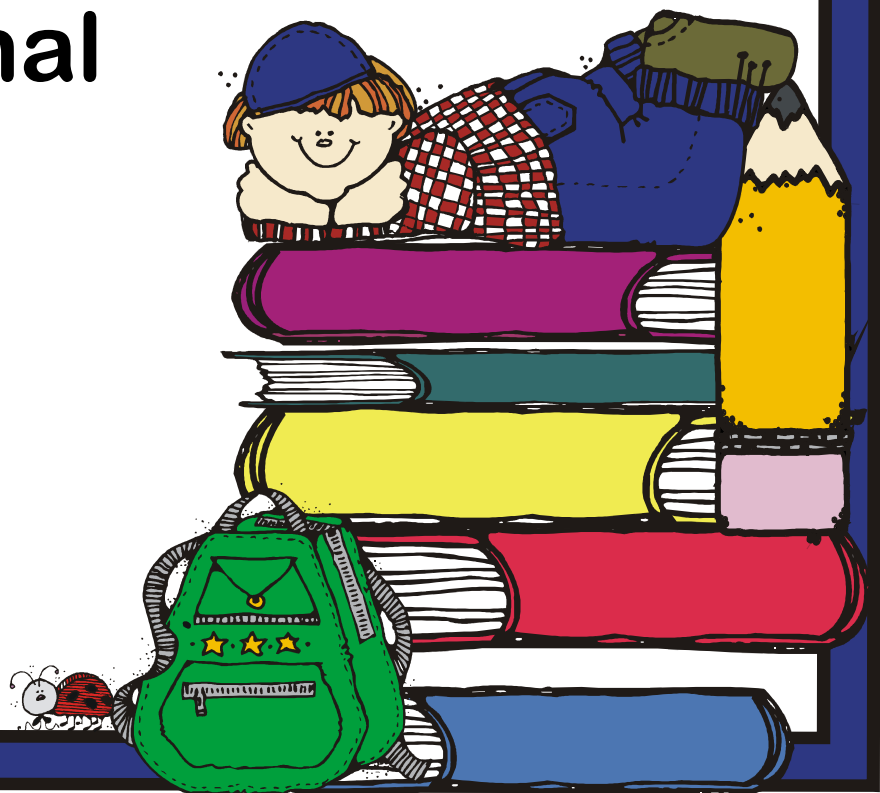


# Summarize

## Language

The response must:

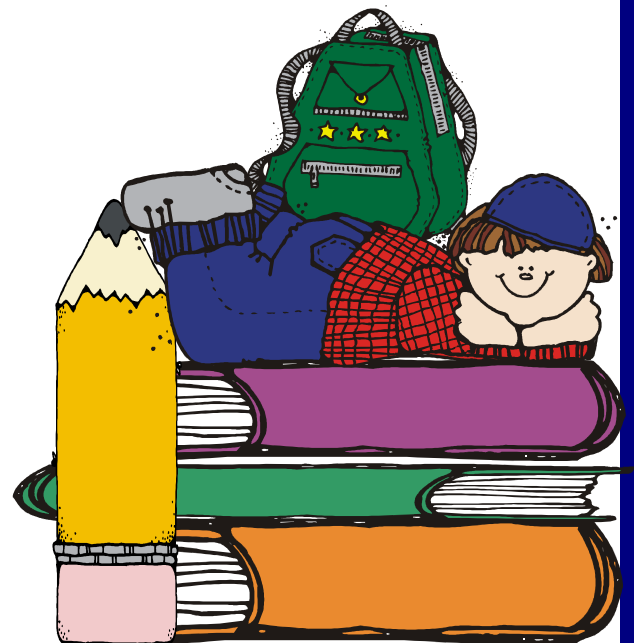
- concisely identify the main idea and give relevant details supporting it in the original text.



# **Use Information From the Reading Selection to Support Your Answer Language**

**The response must:**

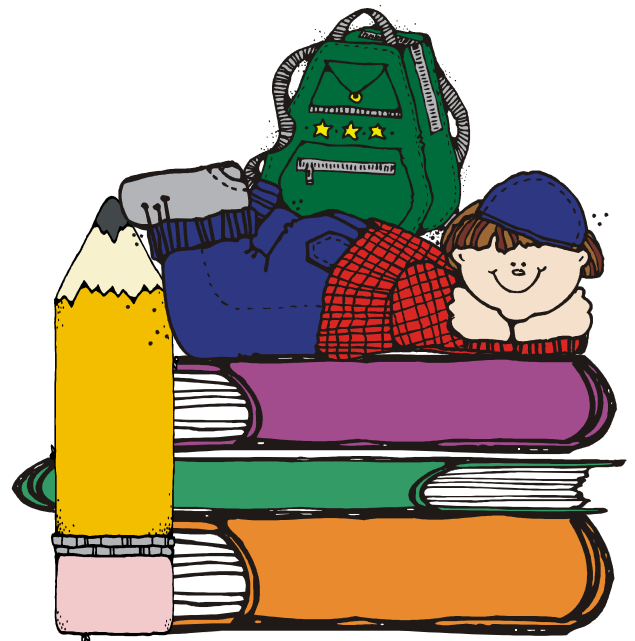
- **use specific details from the reading selection to prove the main idea (point) of the answer.**



# **Use Your Own Ideas to Support Your Answer Language**

**The response should:**

- **include the student's prior knowledge and experience of the topic of the reading selection to develop the main idea (point) of the answer.**



# List

Language or  
Mathematics

Response must :

- include information in point form.

